

## IN THIS SECTION....

## WHEELS

Inner tube	36
Locking wheel nuts	35
Spare wheel carriers	36
Spare wheel covers	36
Wheel spacers & adaptor kits	37
Wheel wrenches	37
Wheels	38



## LOCKING WHEEL NUTS



RRB100510



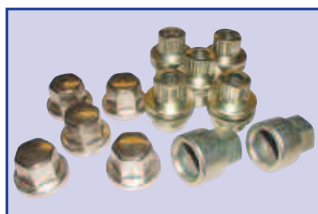
RTC9535



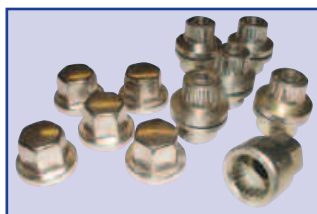
STC3420



STC3601



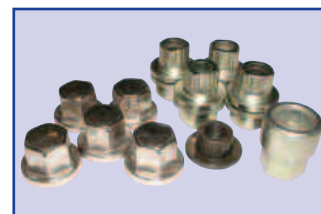
STC7623



STC8513



STC50080



STC8843AA

#### Locking wheel nut keys for Defender/Discovery 1/Discovery 2/Range Rover P38

Code A	<a href="#">STC3420</a>
Code B	<a href="#">STC3421</a>
Code C	<a href="#">STC3422</a>
Code D	<a href="#">STC3423</a>
Code E	<a href="#">STC3424</a>
Code F	<a href="#">STC3425</a>
Code G	<a href="#">STC3426</a>
Code H	<a href="#">STC3427</a>
Code I	<a href="#">STC3428</a>
Code J	<a href="#">STC3429</a>

#### Locking wheel nuts and keys for Freelander to 2006

	Locking wheel nut	Locking wheel nut key
Code A	<a href="#">RRD100520</a>	<a href="#">KBM100450</a>
Code B	<a href="#">RRD100530</a>	<a href="#">KBM100460</a>
Code C	<a href="#">RRD100540</a>	<a href="#">KBM100470</a>
Code D	<a href="#">RRD100550</a>	<a href="#">KBM100480</a>
Code E	<a href="#">RRD100560</a>	<a href="#">KBM100490</a>
Code F	<a href="#">RRD100570</a>	<a href="#">KBM100500</a>
Code G	<a href="#">RRD100580</a>	<a href="#">KBM100510</a>
Code H	<a href="#">RRD100590</a>	<a href="#">KBM100520</a>
Code I	<a href="#">RRD100600</a>	<a href="#">KBM100530</a>
Code J	<a href="#">RRD100610</a>	<a href="#">KBM100540</a>

[ANR6094L](#) Freelander locking wheel nut cap

[KBP10001](#) Universal nut cover removal tool

#### [RRB100510](#)

Discovery 2 with alloy wheels

Kit contains - 1 x nut; 1 x key; 1 x cover; 1 x removal tool

#### [RTC9535](#)

Range Rover Classic 1989 to 1994/Defender/Discovery 1 with steel wheels

Kit contains - 5 x nuts; 1 x key (black finish)

#### [STC3601](#)

Defender/Discovery 1 with alloy wheels

Kit contains - 5 x nuts; 1 x key; 1 x black bag for key

#### [STC7623](#)

Defender with deep dish alloy wheels

Kit contains - 5 x nuts; 2 x keys

#### [STC8513](#)

Range Rover P38A with alloy wheels

Kit contains - 5 x nuts; 1 x key

#### [STC50080](#)

Discovery 2 - Full set of wheel nuts

Kit contains - 4 x locking nuts; 4 x spare caps; 18 x normal nuts (inc. caps); 1 x key; 1 x remover tool

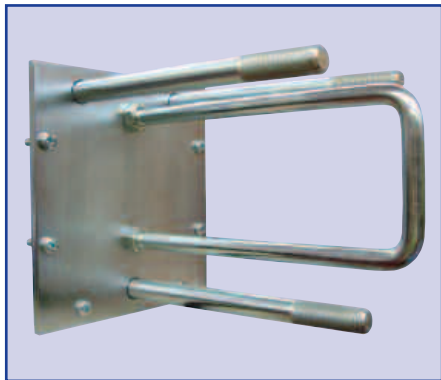
#### [STC8843AA](#)

Range Rover Classic 1989 to 1994/Defender/Discovery 1 with alloy wheels (not deep dish wheels)

Kit contains - 5 x nuts; 1 x key

Protect your valuable wheels and tyres from theft!

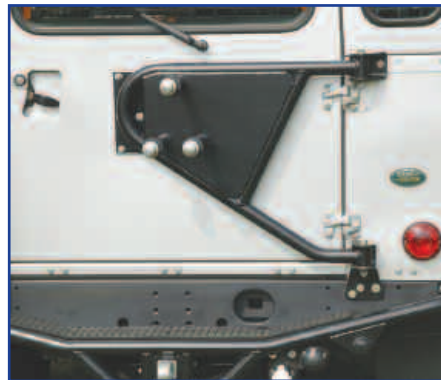
## SPARE WHEEL CARRIERS



DA2215



DA2232



DA2259



DA2274



DA2820 & DA2821

### DA2215

Defender/Series Rear door mount

### DA2232

Defender/Series Swing away

### DA2259

Defender 2002 on Swing away

A unique design by Mantec Services. Works with the door - the carrier moves smoothly and with ease as the door is opened and closed from the inside or outside. Carrier puts the weight of the wheel as close to the door as possible to reduce the tendency of the carrier vibrating with the vehicle.

### DA2274

Defender Half door drop down

Used on a full door this wheel carrier can offer extra security to your vehicle.

The following spare wheel carriers are a unique design by Mantec for the rear door of the Land Rover Defender. If you have ever had a door mounted spare wheel carrier rattle and then fall apart you will appreciate the design and manufacturing quality of the carrier. It is better built and mounts onto the chassis and as a result is more load bearing.

### DA2820 **NEW**

Defender - Pre-2002 Swing away

### DA2821 **NEW**

Defender - 2002 onwards Swing away

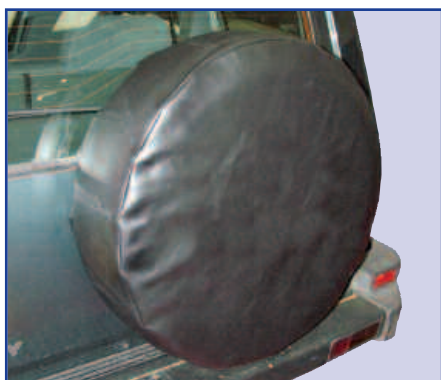
### DA2822 **NEW**

Defender Half door

**Note** - To fit alloy wheels to DA2232, DA2259 & DA2274 use 3 x KTD500030 spacers.

**ff** The Britpart logo has become a widely recognised and highly respected marque; it embodies excellence in the field, both in quality and commitment to meeting the needs of the customer. **”**

## SPARE WHEEL COVERS



DA2026

DA2021	750 x 16	Plain black
DA2022	600 x 16	Plain black
DA2026	205 x 16	Plain black

## INNER TUBE

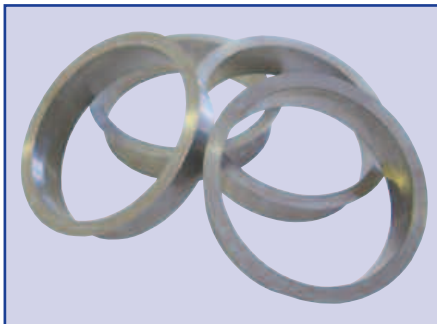


DA3000

DA3000 750 x 16



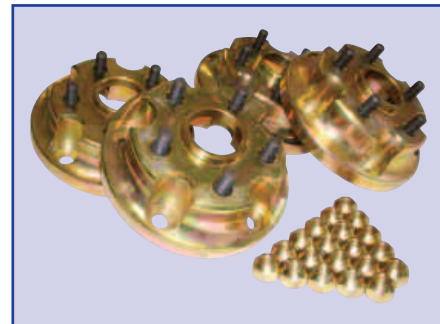
## WHEEL SPACERS & ADAPTOR KITS



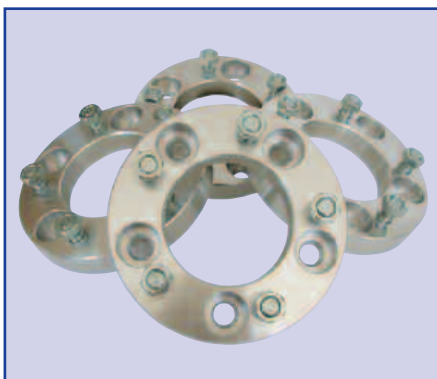
DA2075



DA5005



DA5006



DA5004

### Wheel Adaptor Kit

#### DA2075

To fit Range Rover L322 wheels to Range Rover P38 - aluminium

#### DA5005

To fit Range Rover P38 wheels to Range Rover Classic

#### DA5006

To fit Discovery 2 wheels to Defender

### Wheel Spacers

#### DA5004

Defender/Range Rover Classic/Discovery 1

30mm thick, steel machine finish complete with wheel nuts

## WHEEL WRENCHES



537179



DA4026



NTC7829



NTC7829HD

537179	15/16"
DA4026	27mm
NTC7829	27mm
NTC7829HD	27mm Heavy-duty

Get a good grip on those tight wheel nuts



Britpart now stock a range of accessories for the new Land Rover models...

**BE PART OF IT!**

## WHEELS



**ANR1534PM**



**ANR3973**



**ANR4583PM**



**ANR4583SILVER**



**ANR4635PM**



**ANR4636PM**



**ANR5593PM**



**NTC5193PM**



**NTC7739MUE**



**RRC114560MUW**



**ANR3631MNH**



**ANR5307MNH**



**RRC501470MCM**



**RRC503400MNH**

Smarten  
up your  
Land Rover  
with a  
smart new  
set of alloy  
wheels.

<b>ANR1534PM</b>	Series/Defender	Steel 1 ton 569204 welded 6.5 x 16 primed
<b>ANR3631MNH</b>	Defender/Discovery 1	16" Deepdish alloy
<b>ANR3973</b>	Freelander	Steel 5.5J x 15
<b>ANR4583PM</b>	Defender	Steel Wolf rim welded tubeless 6.5J x 16 black <b>Note</b> - Use longer studs (FRC7577)
<b>ANR4583SILVER</b>	Defender	Steel Wolf rim welded tubeless 6.5J x 16 silver <b>Note</b> - Use longer studs (FRC7577)
<b>ANR4635PM</b>	Defender/Range Rover Classic	Steel Ro-Style NTC2165 primed
<b>ANR4636PM</b>	Series/Defender	Steel standard welded tube type 5.5F x 16 primed
<b>ANR5307MNH</b>	Defender - from TA/Discovery 1	16" Tornado alloy
<b>ANR5593PM</b>	Defender	Steel Wolf rim welded tube type 6.5J x 16 primed
<b>NTC5193PM</b>	Discovery	Steel 7 x 16 primed
<b>NTC7739MUE</b>	Discovery	Alloy Propeller/Cyclone type 7 x 16 Quicksilver
<b>RRC114560MUW</b>	Discovery 2	Steel silver 7J x 16
<b>RRC501470MCM</b>	Range Rover P38/Discovery 2	18" Hurricane alloy
<b>RRC503400MNH</b>	Defender - 1987 onwards	Boost alloy - 7 x 16