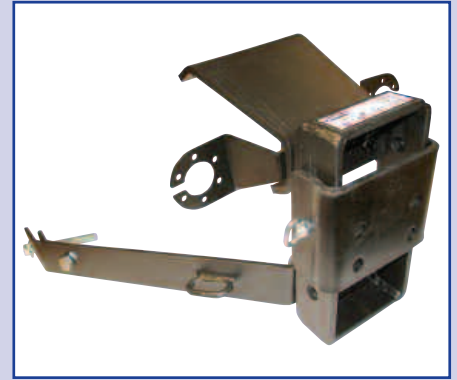
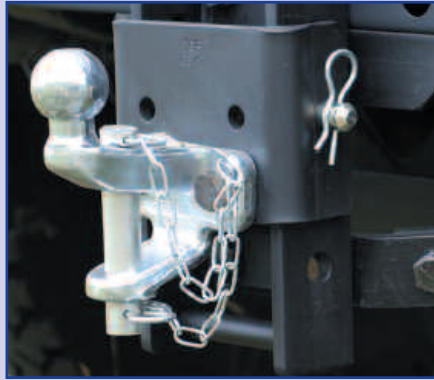


## IN THIS SECTION....

## TOWING EQUIPMENT

All Land Rover models	43
Defender	44
Discovery	44
Freelander	45
Range Rover	45
Series	46



## ALL LAND ROVER MODELS



67187



201691



DA2123

<b>67187</b>	All	Pin universal coupling HD (201691)
<b>201661</b>	All	Towing jaw (3 1/2 ton)
<b>201691</b>	All	Ball and jaw + pin HD 4 bolt mounted (Ball 3.5 ton/Jaw 5 ton)
<b>579408</b>	All	7 Pin trailer plug
<b>ANR3635</b>	All	50mm Tow ball cover
<b>DA2123</b>	All	Ball & jaw + pin (RTC8159)
<b>DA2123A</b>	All	Replacement chain, tag, clip
<b>DA2194</b>	All	Replacement pin for DA2123
<b>DA2195</b>	All	Replacement slider bracket
<b>DA2196</b>	All	Replacement slider pin
<b>DA2197</b>	All	Replacement slider pin 'R Clip'
<b>DA5100</b>	All	Tow hitch - to tow 3,500kgs gross
<b>NRC2051</b>	NATO	Tow hitch
<b>RTC8831</b>	All	Saddle slider - fits all Dixon Bates kits



DA5100

Britpart have the equipment to get you hitched up and towing!

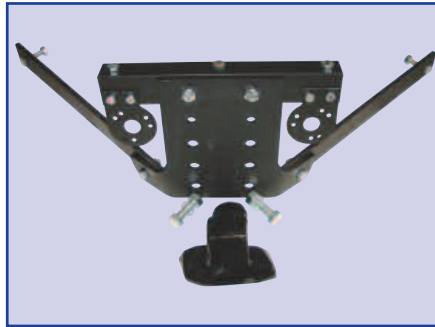


NRC2051

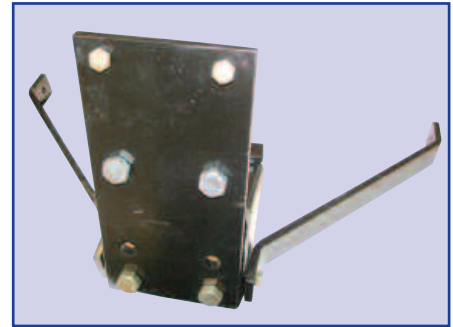
## DEFENDER



DA2120



DA2136



DA2165



RTC8891AA



DA2123/STC50255AA

<b>DA2120</b>	Defender	Plate extension kit
<b>DA2121</b>	Defender	Adjustable kit (RTC8828)
<b>DA2136</b>	Defender 90 - from WA	Towbar assembly (VUB105460) - no electrics
<b>DA2137</b>	Defender 110 - from WA	Towbar assembly (VUB105470) - no electrics
<b>DA2165</b>	Defender 90	Drop plate
<b>RTC8872</b>	Defender	'N' Type electrics
<b>RTC8891AA</b>	Defender	50mm Tow ball
<b>STC50255AA</b>	Defender Td5 90	Adjustable tow kit
<b>STC50256AA</b>	Defender Td5 110	Adjustable tow kit
<b>YWJ101500</b>	Defender Td5	'N' Type electrics plug

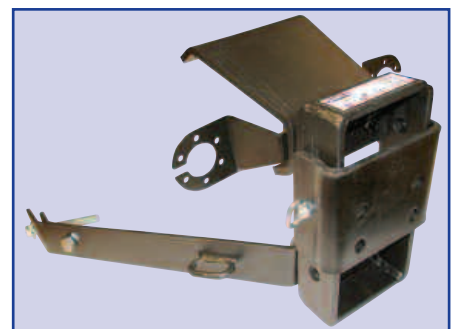
## DISCOVERY



DA2125



DA2138



STC50289AB



STC8919AA

<b>DA2125</b>	Discovery 1 - 1994 on	Adjustable coupling (RTC8830, STC8060)
<b>DA2134</b>	Discovery 1 - to 1994	Tow kit (STC8816) to 1994 - includes electrics but not plug-in electrics
<b>RTC8891AA</b>	Discovery 1	50mm Tow ball
<b>DA2138</b>	Discovery 2	Towing kit
<b>STC50287AB</b>	Discovery 2	Tow kit - coil suspension - no electrics
<b>STC50289AB</b>	Discovery 2	Tow kit - air suspension - no electrics
<b>KNB500011</b>	Discovery 3	Quick release tow bar
<b>LR005740</b>	Discovery 3	Multi-height tow bar
<b>STC8919AA</b>	Discovery 3	Tow strap
<b>YWJ500201</b>	Discovery 3	Tow bar electrics kit 'N' & 'S' type

## FREELANDER



VUB501490



LR002738

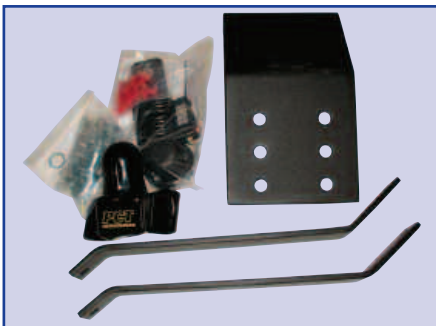


LR002742

STC50391	Freelander	Tow kit - includes electrics but not plug-in electrics
VUB501490	Freelander	Towing kit - UK style 50mm ball fitted <b>Note</b> - This has a plug connection to the vehicle loom - with electrics
VUB501500	Freelander	Towing kit - Swan neck detachable - with electrics
LR002738	Freelander 2	Tow bracket kit
LR002740	Freelander 2	Tow bracket kit - detachable ball tow bar
LR002742	Freelander 2	Tow bracket kit - swan neck
LR002744	Freelander 2	Tow bracket kit - Canada, Mexico, USA
LR003106	Freelander 2	Electrics kit - 12N/12S 7 pin socket
LR003107	Freelander 2	Electrics kit - 13 pin socket
LR003108	Freelander 2	Electrics kit - Canada, Mexico, USA



## RANGE ROVER



DA2134



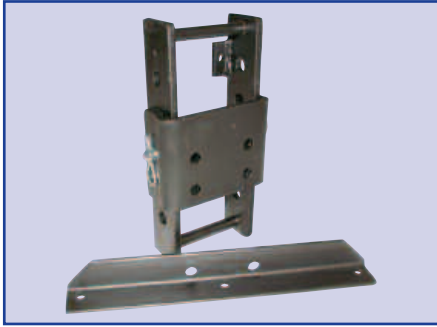
RTC8829



VUB000720

DA2125	Range Rover Classic	Adjustable coupling (RTC8830, STC8060)
DA2134	Range Rover Classic	Tow kit (STC8816) to 1994 - includes electrics but not plug-in electrics
RTC8829	Range Rover Classic	Towing kit
DA4030	Range Rover P38	Tow kit - includes electrics, no tow ball <b>Note</b> - No tow ball included. It is not a Swan neck type, a standard 50mm tow ball is required (RTC8891AA). Electrics are included.
KNB500011	Range Rover Sport	Quick release tow bar
STC8919AA	Range Rover Sport	Tow strap
VUB501430	Range Rover Sport	Multi-height tow bar
STC8919AA	Range Rover L322	Tow strap
VUB000720	Range Rover L322	Multi-height tow bar - includes carry bag
VUB000730	Range Rover L322	Quick release tow bar
VUB000740	Range Rover L322	Tow bar armature - towing subframe - pre 2006 model years <b>Note</b> - The tow bar armature accepts quick release, multi-height tow bars and bike carrier
VUB503960	Range Rover L322	Tow bar armature - towing subframe - 2006 model year only
YWC000840	Range Rover L322	Towing electrics control unit
YWJ500450	Range Rover L322	Tow bar electrics kit 12'N' & 12'S' type

## SERIES



DA2122



RTC8891AA



DA2129

<b>DA2012</b>	Series SWB	Plate and bracket (short)
<b>DA2133</b>	Series 109/88	Drop plate extension
<b>DA2122</b>	Series	Adjustable kit
<b>RTC8891AA</b>	Series	50mm tow ball
<b>DA2129</b>	Lightweight	Adjustable tow hitch

